



EZ-Zone Client Installation

Operators Manual

Multiple Computer
Network Setup

Standard support line:
(416) 231-5841
e-mail sales@ezzone.net

web-site <http://www.ezzone.net>

Copyright information

Optizone Enterprise by EZ-Zone Software Ltd.
(C) All rights reserved. 1994-2004
Print 01/07/2004

END-USER LICENSE AGREEMENT OPTIZONE ENTERPRISE

LICENSE: 1

Important Read Carefully

This EZ-ZONE end user license agreement ("EULA") is a legal agreement between you (either an individual or a single entity) and the EZ-ZONE software product identified above, which includes computer software and associated media and print materials, and may include "on-line" or electronic documentation. By installing, copying or otherwise using the software product, you agree to be bound by the terms of the EULA. If you do not agree to the terms of this EULA, promptly return the software product and the accompanying items to the place obtained it for a full refund.

EZ-ZONE Software Ltd. (EZ-ZONE) Product License

Copyright law and international copyright treaties, as well as other intellectual property laws and treaties protect the software product. The software product is licensed, not sold.

1. Grant Of License. - The EULA grants you the following rights:

Software - You may install and use one copy of the software product, or in its place, any prior version for the same operating system, on a single computer. The primary user of the computer on which the software product is installed may make a second copy for his or her exclusive use for the purpose of archiving the software and or attached database.

Storage and network use - You must acquire and dedicate a license for each separate computer on which the software product is installed or run from the storage device. A license for the software product may not be shared or used concurrently on different computers.

2. Other Rights And Limitations

Limitations on reverse engineering, decompilation, and disassembly - You may not reverse engineer, decompile, or disassemble the software product, except and only to the extent that such activity is expressly permitted by applicable law not withstanding this limitation.

Separation of components - The software product is licensed as a single product. Its component parts may not be separated for use on more than one computer.

Rental - You may not rent or lease the software product.

Software transfer - You may permanently transfer all of your rights under this EULA, provided you retain no copies, you transfer the entire software product (including all component parts) and the recipient agrees to the terms of the EULA. If the software product is an upgrade, any transfer must include all prior versions of the software product.

Termination - Without prejudice to any other rights, EZ-ZONE may terminate this EULA if you fail to comply with the terms and conditions of this EULA. In such an event, you must destroy all copies of the software product and all of its component parts.

3. Copyright

All title and copyrights in and to the software product (including but not limited to any images, photographs, animations, video, audio etc.) The accompanying printed materials, and any copies of the software product are owned by EZ-ZONE Software Ltd. Copyright and international treaty provisions protect the software product. Therefore, you must treat the software product like any other copyrighted material except that you may either (A) make one copy of the software product solely for back-up or archival purposes or (B) install the software product on a single computer provided you keep the original solely for backup or archival purposes. You may not copy the printed materials accompanying the software product.

4. Export restrictions

You agree that neither you nor your customers intend to or will, directly or indirectly, export or transmit electronically, the software product and its related documentation.

Miscellaneous

The law of the province of Ontario, Canada, governs this EULA. Each of the parties hereto attorns to the jurisdiction of the courts of the province of Ontario and further agrees to commence any litigation, which may arise hereunder in the courts located in the judicial district of Toronto, province of Ontario.

Limited Warranty

EZ-ZONE Software warrants that the software product will perform substantially in accordance with the accompanying written materials for a period of 90(ninety) days from the date of receipt.

No other warranties

To the maximum extent permitted by applicable law, EZ-ZONE Software Ltd. And its suppliers disclaim all other warranties, either expressed or implied, including, but not limited to, implied warranties of merchantability and fitness for a particular purpose, with regard to the software product, and accompanying hardware. This limited warranty gives you specific legal rights.

No liability for consequential damages from electronic message sending

To the maximum extent permitted by applicable law, in no event shall EZ-ZONE Software Ltd. or its suppliers be liable for any special, incidental, indirect, or consequential damages whatsoever (including, without limitations) damages from improper and or illegal use of the electronic mail sending tools included with this software product. You are solely responsible for the e-mail messages you send. In many instances sending unsolicited email "Spam" is in violation of the law, and you will be solely accountable and liable for damages and violations. Our e-mail products are not to be used to send unsolicited email, distribute illegal information, or to send information that would be deemed false or misleading. You are to unsubscribe people at their request. You are to e-mail "opted-in" permission based e-mail messages only, whereby recipients have given affirmative consent to receive electronic messages. You will abide by all laws that will affect your ability to send electronic mail.

No liability for consequential damages

To the maximum extent permitted by applicable law, in no event shall EZ-ZONE Software Ltd. Or its suppliers be liable for any special, incidental, indirect, or consequential damages whatsoever (including, without limitations) damages for loss of business profits, business interruption, loss of business information, or any other pecuniary loss arising out of the use of or inability to use the software product, even if EZ-ZONE Software Ltd. Has been advised of the possibility of such damages.

Store & Office Hardware Requirements – The first part of this guide is for offices with a local area network (LAN). A local area network consists of computers connected together at one-location sharing data files, printers and hardware resources. A LAN will require a Ethernet distribution hub to patch client computers in. The computers can be networked peer to peer with NETBUI or TCP/IP protocols for small offices. The newest computer can become the "data server" and the drive with the EZ-Zone program needs to have share privileges so that the other machines can access the .exe file. See the EZ-Zone software help menus for more information. *EZ-Zone Software does not require a special server computer to network on a small LAN. Although larger databases (50mg or larger) will require a server for speed purposes.

Equipment Requirements Hardware and Software

In order to install and operate Optizone Enterprise, you will require the following:

Minimum hardware requirements

- 600 Mhz or faster CPU
- 128 Meg RAM (512 Meg ram for server)
- 3 1/2 inch disc drive
- CD ROM drive (RW for back up)
- 40 gig hard drive
- Zip drive for back up
- Fax modem
- 2 printers (one dedicated for labels)
- Color monitor
- Phone line
- Network card for LAN (Local Area Network)
- ADSL Modem or higher for WAN (Wide Area Network)
- Internet Bandwidth 128 k or higher
- Router

SOFTWARE:

- Windows NT 4.0 service pack 6a, 2000, XP
- For multiple locations serving - Windows 2003 Server
- Winfax pro 10 for faxing and e-mailing.
- Outlook Express For e-mail serving.

These are the minimum equipment requirements. A faster machine would increase the speed of your Optizone Enterprise system.

Local Area Network (LAN) Four Station Peer to Peer

The Ethernet hub connects the computer stations together to allow data and hardware resources to be shared. Ethernet hubs are now available in wireless format as well, eliminating the need for wires.

Definitions:

Server computer – the computer that will serve the data from the EZ-Zone software that you are installing.

Client computer – the computers that will access the data from the server.

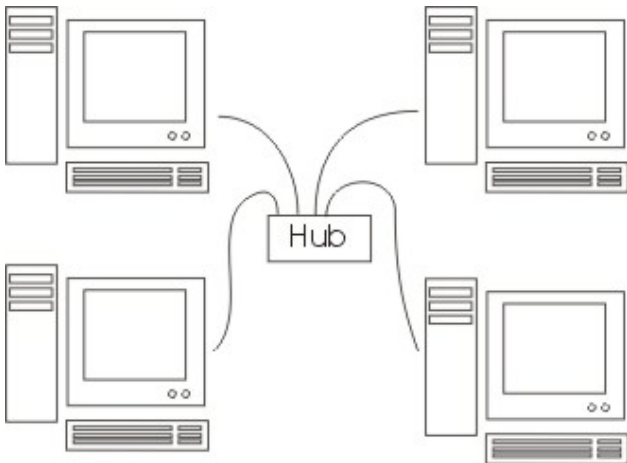
If you do not have a dedicated server, make one computer the "server". Select the most robust computer you have. It should have at least 512 Mb of RAM. It must run at all times. After loading the EZ-Zone Software, set up network sharing. Right click on the EZ-Zone software on the "C" drive of the serving computer and select properties. Select the sharing tab and select share with others on the network and select allow others to read and write to this file.

The EZ-Zone Client Installation software must be installed on all the client computers to allow connection to the server.

Go to the network to find your server computer. Open the local "C" drive which is the default location of the EZ-Zone software. Drag and drop the *.exe file from the server program to the desk top of the other computers. A "short cut" to the *.exe may be

required to built on the server directory and the client desktop short cuts pointing to the server short cut.

LAN – (Local Area Network)



Standard Printers - can be used in a variety of formats. Tractor style printers work well for single and multiple label printing. Laser and bubble jet printers work well for volume reports and invoicing. The printer(s) can be connected to the parallel port or USB on one computer and be shared by all computers on the LAN through "Sharing".

Barcode scanners - are easily connected using a key board wedge. Simple connect the scanner between your keyboard and computer.

FAX Software Requirements

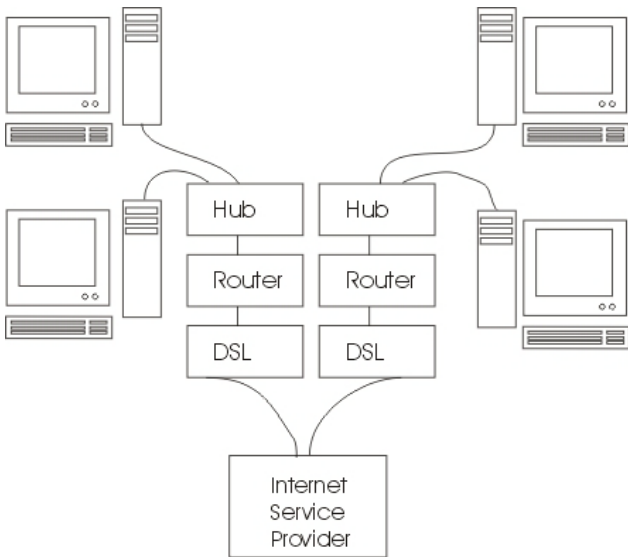
The ability to send and receive faxes from a desktop computer is quite simple. All reports that are printed can be faxed. We recommend Winfax Pro 10.0 or for faxing and e-mailing. Microsoft XP has fax software included.

Wide Area Networking (WAN) - Large Chain or Franchise with Multiple Geographic Locations Interconnected

When constructing a WAN it is recommended to hire a professional within your community that can build and service a WAN for your needs.

EZ-Zone Software will function over a WAN well with the technology built into Microsoft XP. Use "Remote Desktop Web Connection". Connect to a computer's desktop from a remote location, and run applications as if you were sitting at its console. Installation instructions are located on the help menu of XP. DSL internet connection and the use of a server will be required.

WAN (Wide Area Networking)



Make one computer the "server". It must run at all times. Network sharing can be set up on the "C" drive of the serving computer. Computer file security is very important.

Use a router to connect and create a hardware security firewall.

The Internet service provider will need to give you an IP address so that the other computers can be connected.

The EZ-Zone Client Installation program must be installed on the client computers, so that the proper control libraries are installed

Remote Desktop Web Connection on Microsoft XP

Remote Desktop Web Connection is a Web application that consists of an ActiveX control, sample ASP pages, and other files. When deployed on a Web server, Remote Desktop Web Connection allows users to create a connection with the remote desktop of another computer inside Internet Explorer, even if the Remote Desktop Connection program, formerly known as the Terminal Server client, is not installed on the user's computer.

Remote Desktop Web Connection offers the following:

Simple, straightforward deployment of the client portion of Terminal Server or Remote Desktop applications. With Remote Desktop Web Connection, deploying a terminal server connection can be as easy as sending a URL.

Support for roaming users. Users who are away from their computers can use Remote Desktop Web Connection to gain secure access to their primary workstation or favorite terminal server from any computer running Windows and Internet Explorer.

A lowest common denominator cross-platform system. Remote Desktop Web Connection may

meet the needs of organizations that want identical clients on all platforms.

Delivery of extranet applications. Corporations that want to deploy terminal server or Remote Desktop connections to vendors, suppliers, or customers can use Remote Desktop Web Connection to distribute them easily, inexpensively, and efficiently over the Internet.

For information on using Remote Desktop Web Connection from the client computer, see Windows Server Help -To connect to another computer using Remote Desktop Web Connection.

Disclaimer - EZ-Zone Software Ltd. does not imply any warranties or accuracy to the above information. Use of a professional network and professional hardware consultants is highly recommended.*

** Outlook Express, Windows NT 4.0, 2000 Professional and XP are registered trademarks of Microsoft Corporation**

Program Installation

Installation:

Install the CD ROM, and run the setup program.

Insert CD and follow the instructions.

To install the program manually push start at the lower left hand corner and push run. Find the *setup.exe* file on the CD ROM (or use the browse button to find your cd-rom) and push ok or enter. Optizone Enterprise wizard will give you set up commands from there. You may have to go to settings and push taskbar to add the icon to your desktop. Review your help menu for taskbar functions.